

FINAL PLACEMENT REPORT BATCH OF 2024-2026



JBIMS
Jamnalal Bajaj Institute of Management Studies

Jamnalal Bajaj Institute of Management Studies

164, Backbay Reclamation, H.T. Parekh Marg, Churchgate, Mumbai,
Maharashtra 400020, India



FOREWORD

Jamnalal Bajaj Institute of Management Studies (JBIMS) has established itself as one of India’s most distinguished and prestigious business schools. Widely acclaimed as the “CEO Factory,” the institute proudly upholds a legacy of over six decades of academic distinction and professional excellence. The unique confluence of permanent and visiting faculty members provides students with extensive domain expertise and industry insights, while fostering an intellectually enriching and transformative learning environment. At JBIMS, students are exposed to a rigorous and rewarding management education designed to cultivate analytical thinking, leadership, and professional competence. The institute’s dynamic curriculum incorporates contemporary pedagogical approaches, including contextual learning, industry engagement, and experiential training, thereby instilling in students a strong commitment to excellence and continuous development. The institute’s student-centric ethos and robust corporate engagement framework have enabled JBIMS to earn the enduring confidence of leading organizations across industries year after year. The institute’s continued success is a testament to the invaluable contributions of its esteemed faculty and accomplished alumni, whose unwavering support and steadfast belief continue to guide JBIMS towards newer milestones of achievement. JBIMS remains committed to carrying forward its rich legacy of nurturing versatile professionals with a holistic perspective, strong values, and exemplary leadership capabilities.

The following report enlists the placement outcomes for three different courses being run in the institution:

1. Masters of Management Studies (MMS)
2. Masters of Science in Finance (M.Sc. Finance)
3. Masters in Human Resource Development (MHRD)

MESSAGE FROM THE LEADERSHIP



“

JBIMS continues to uphold its legacy as one of India's most respected management institutions, driven by a strong foundation of academic rigor, industry engagement, and value-based education. Our focus remains on nurturing capable professionals who are equipped to lead with vision, resilience, and responsibility in an increasingly dynamic global environment.

The successful culmination of the placement season is a reflection of the dedication and perseverance of our students, the mentorship of our faculty, and the continued trust placed in us by our esteemed recruiters and alumni. Their unwavering support has played an instrumental role in strengthening the institute's standing across industries and sectors.

As the business landscape continues to evolve, JBIMS remains committed to fostering innovation, ethical leadership, and lifelong learning among its students, preparing them to contribute meaningfully to organizations and society alike.

Dr. Kavita Laghate,
Director, JBIMS



“

The successful completion of the Final Placement Process for the Batch of 2024 - 2026 marks yet another milestone in the journey of JBIMS. We sincerely appreciate the confidence shown by our recruiters, whose continued association and support played a pivotal role in the success of this placement season.

The institute's rigorous academic environment, industry-focused curriculum, and collaborative culture continue to prepare students for challenging business environments across sectors. Our students have consistently demonstrated resilience, adaptability, and leadership, enabling them to excel in diverse roles offered by esteemed organizations.

We extend our heartfelt gratitude to our recruiters, alumni, faculty members, and students for their contribution towards sustaining the strong placement legacy of JBIMS.

Dr. Sudhakar Gaonkar,
Placement Officer, JBIMS

Masters of Management Studies (M.M.S.)

The two-year flagship management course of JBIMS covers the key disciplines of business and management, with a heavy focus on both entrepreneurial and managerial abilities.

MMS BATCH PROFILE

BATCH STRENGTH



74 %
Male

155

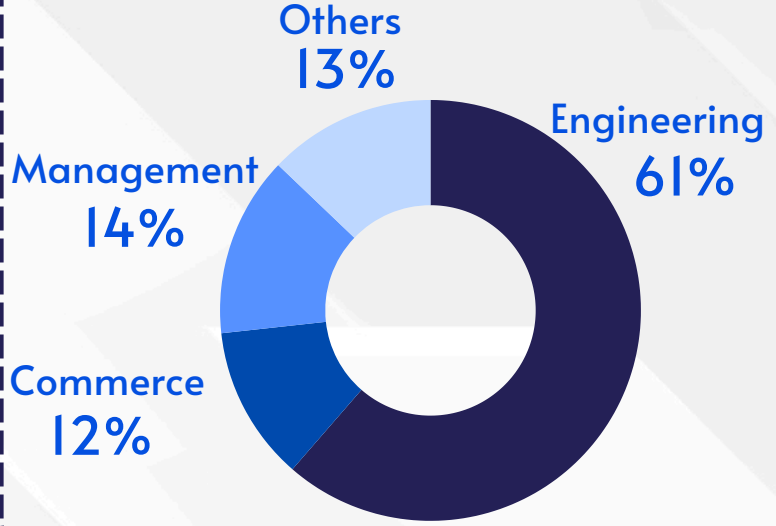


26 %
Female

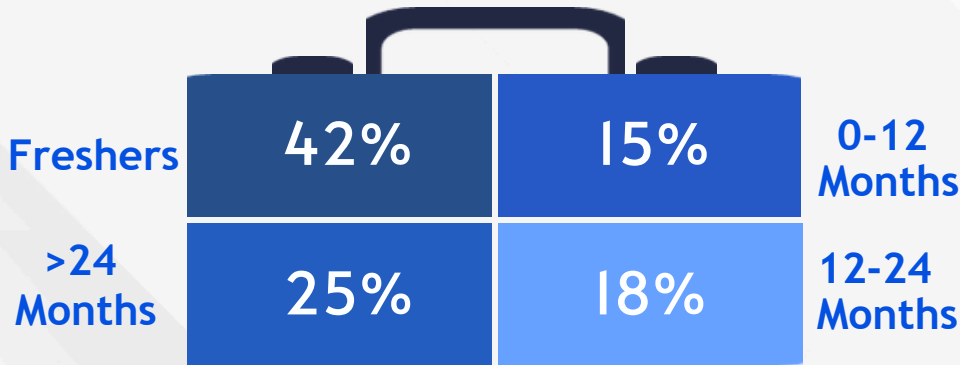
Average
Age

**25
Years**

EDUCATIONAL BACKGROUND



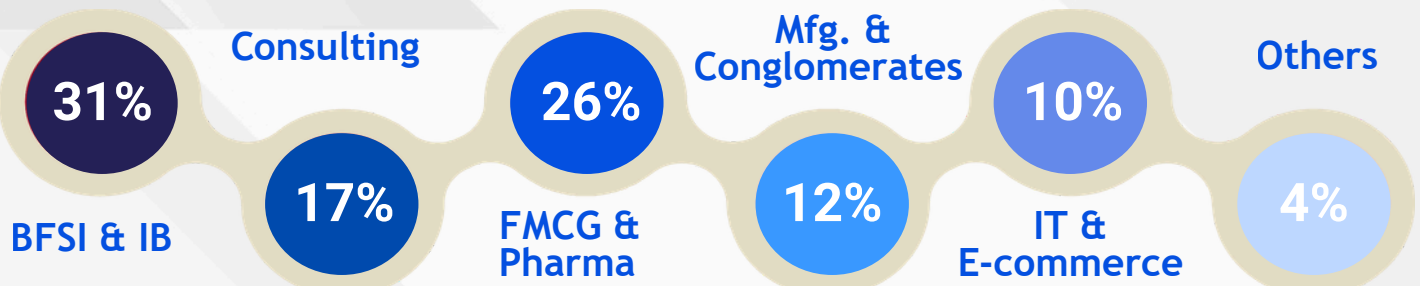
WORK EXPERIENCE



Average
Work
Experience

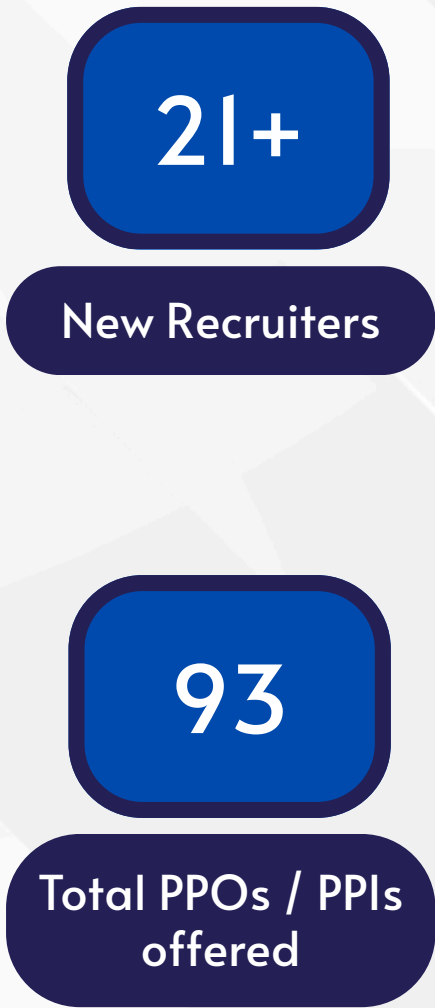
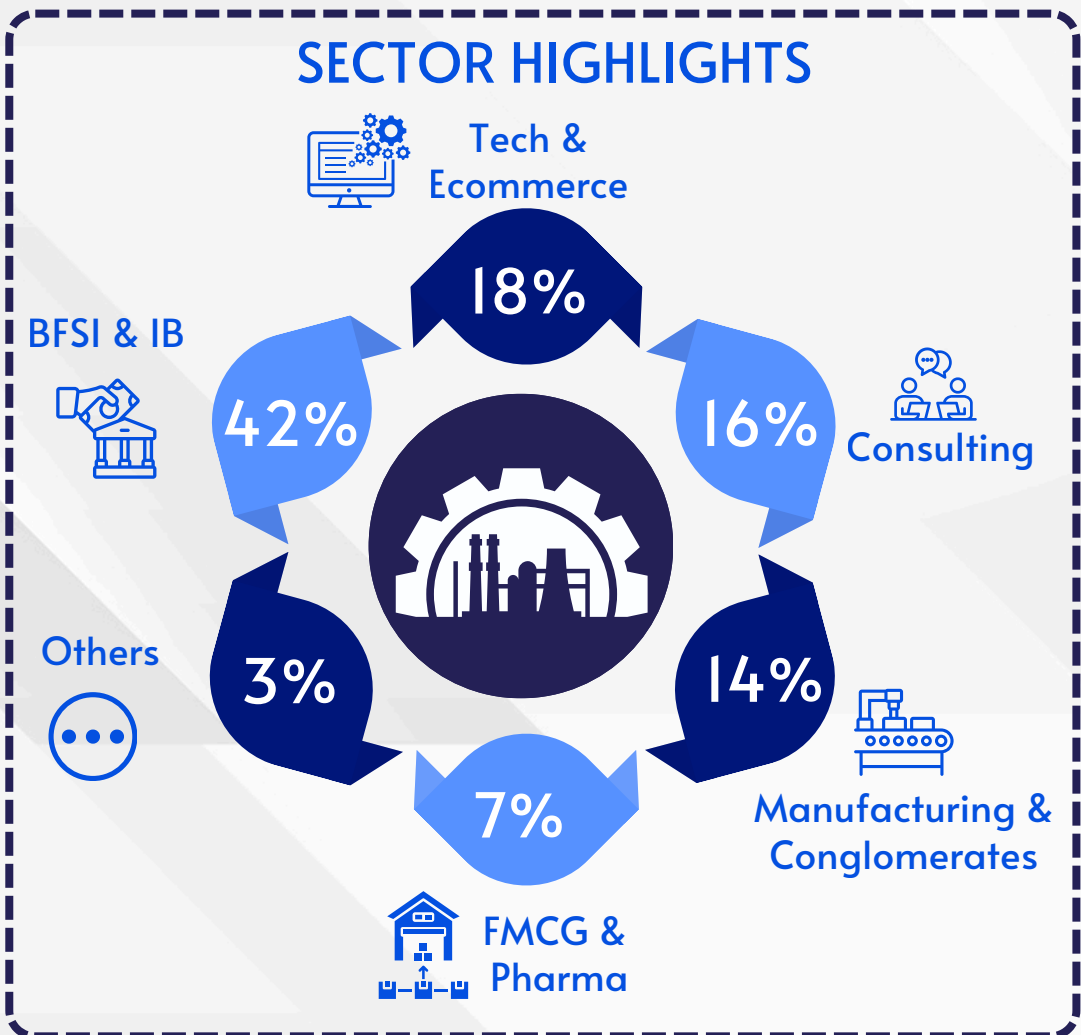
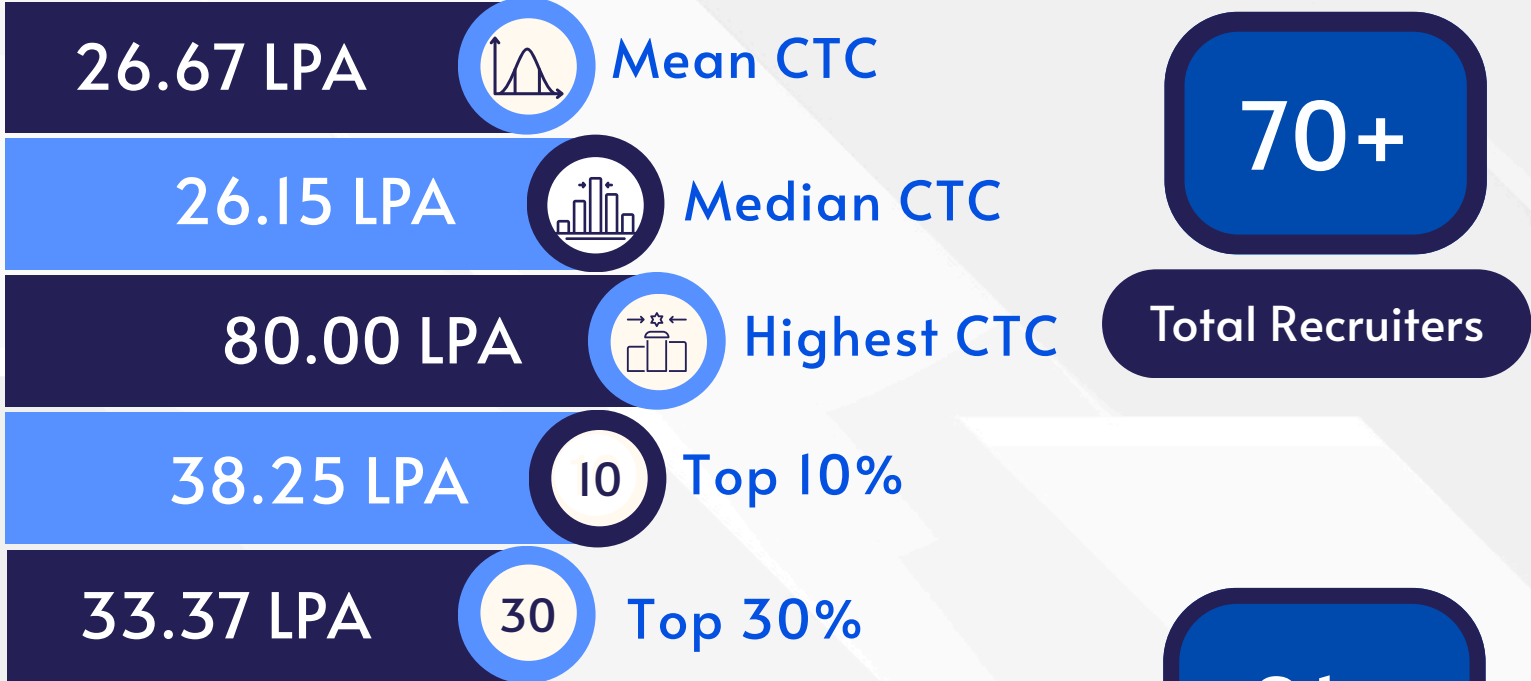
14 Months

INTERNSHIP EXPERIENCE



PLACEMENT OVERVIEW

RECRUITMENT HIGHLIGHTS



PROMINENT COMPANIES



*List of recruiters is non-exhaustive

CORPORATE WALL OF FAME



**1st National
Runner Up**
Accenture B-
School Challenge
Season 9




**National
Finalists**
Mahindra Rise
Challenge 2024



**National
Finalists**
Asian Paints
CANVAS 2025



**National
Finalists**
HP Power Lab
2025



**National
Finalists**
Global
Management
Challenge



**National
Finalists**
Pratyay by FMS
Delhi



**National
Finalists**
Eurogrip TORQ
Challenge 3.0



**National
Finalists**
Bull's Eye
Challenge



**National
Finalists**
Airtel iCreate
2025



**Campus
Winners**
Bajaj Finserv
ATOM Season 8



**Campus
Winners**
HSBC CIB
League 2025



**National
Semi-Finalists**
The JSW
Challenge 2025



**National
Semi-Finalists**
Axis Moves
2025



**National
Semi-Finalists**
Infosys
Ingenious 2025



**National
Semi-Finalists**
Galderma -
GRAD 2.0



**National
Semi-Finalists**
Mondelez Maestros
2024



**National
Semi-Finalists**
SUN Prism 2025



**National
Semi-Finalists**
Grow Beyond
Better

SECTOR SNAPSHOT

BFSI & IB

The BFSI sector witnessed prestigious companies offering coveted roles to students. Firms such as Citi, EAAA Alternatives, HSBC, JP Morgan & Chase, Morgan Stanley and Standard Chartered, etc. offered roles like Advisory, Corporate Banking, Credit Risk, Investment Banking, Management Trainee, Product Management, etc.



HSBC

JPMorganChase

Morgan Stanley



Consulting

accenturestrategy



Deloitte.



McKinsey
&Company



The Consulting sector saw prestigious companies offering coveted roles to students. Firms such as Accenture Strategy, Boston Consulting Group, Deloitte, EY, KPMG, McKinsey & Company and PwC offered roles such as Junior Associate, M&A Advisory, Management Consulting, Strategy & Consulting etc.

FMCG & Pharma

FMCG & Pharma sector saw leading firms like DIAGEO, Haleon, Himalaya Wellness, Kansai Nerolac, Marico, Reckitt, and offering coveted roles such as Corporate Finance, Distribution, General Management, Management Trainee - Finance & Control, Sales & Marketing, etc.

DIAGEO

HALEON



SECTOR SNAPSHOT

Manufacturing & Conglomerates



mahindra^{Rise}



Noteworthy firms from Manufacturing and Conglomerates such as the JSW, Mahindra & Mahindra, Reliance Industries Limited, Vedanta, Welspun offered diverse roles in Business Operations, General Management, Management Trainee, Product Strategy, Supply Chain Management, Trade & Distributions etc.

IT, E-Commerce & Others

Prestigious firms offered desired roles in this sector. Firms like Accenture Technology Consulting, Eternal, HCLTech, Infosys Consulting, Paytm, Porter, etc. offered several roles such as Innovation Evangelist, Operations Management, Product Management, Program Manager, Sales & Marketing, etc.

accenture



HCLTech

Infosys | CONSULTING

paytm

PORTER^o

Placement Summary

The final placements for the academic year 2024-2026 at JBIMS were a success, with participation from more than 70 recruiters. Consistently successful placements over the past 12 years, with coveted roles being offered by recruiters such as Accenture, Aditya Birla Capital Ltd, Anand Rathi, Axis Bank, BCG, Capgemini, Citi Group, Crisil, Deloitte, DIAGEO, EAAA Alternatives, Eternal, EY, Federal Bank, Haleon, HCLTech, HDFC Bank, HDFC ERGO, Hexaware, Himalaya Wellness, HSBC, ICICI Bank, ICICI Securities, ICRA, IIFL, IndusInd Bank, Infosys, JP Morgan & Chase, JSW Group, Kansai Nerolac, Kotak Mahindra Bank, KPMG, LTIMindtree, Magpie Global Limited, Mahindra & Mahindra, Marico, Media.Net, Mercedes Benz, Medanta, Mizuho Capsave, Morgan Stanley, MUFG, Muthoot Finance, NPCI, Nuvama Wealth, PayTM, PayU, PhillipCapital, Piramal Finance, Porter, PWC, Rand Merchant Bank, Reckitt, Reliance, SBI Funds, Standard Chartered Bank, Unity Small Finance Bank, Vahdam, Vedanta, Visa, Welspun Enterprises, Yes Bank etc.

PLACEMENT COMMITTEE



Atharva Bagad



Disha Patil



Jaya Surya



Kashish Oberai



Mayank Nagrale



Parag Agrawal



Raunak Khandelwal



Rishi Newalkar



Rucha Japtap



Samyak Gaurkhede



Sheetal Salvi



Shyam Rathi

“ ——— Message from Placement Committee

We are pleased to announce the successful completion of the Final Placement Season 2026. This year, JBIMS established several new and meaningful partnerships across diverse roles, contributing to exceptional placement outcomes. The season represented a significant achievement, with JBIMS surpassing its previous records and setting a new benchmark for future batches, further reinforcing its position as one of India's leading B-schools.

We extend our heartfelt gratitude to all our esteemed corporate partners for their continued confidence and steadfast support of JBIMS. We look forward to nurturing these new collaborations and fostering enduring, mutually beneficial relationships in the placement seasons ahead.

Master of Science in Finance (M.Sc. Finance)

The two-year full-time course started in 2013 is uniquely designed to mould 'Future Financial Leaders'.

M.Sc. Finance BATCH PROFILE

BATCH STRENGTH



74 %
Male

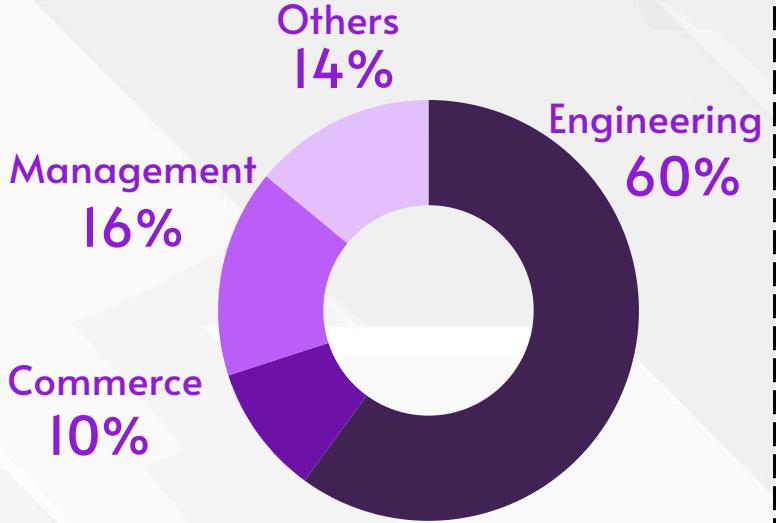


26 %
Female

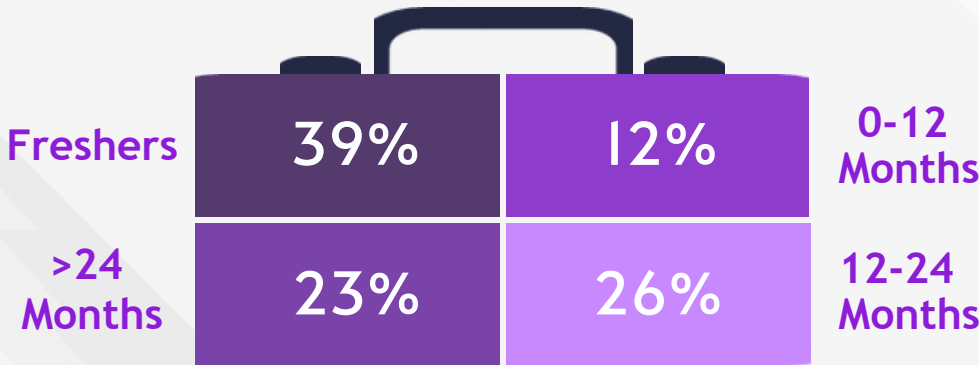
Average
Age

24
Years

EDUCATIONAL BACKGROUND



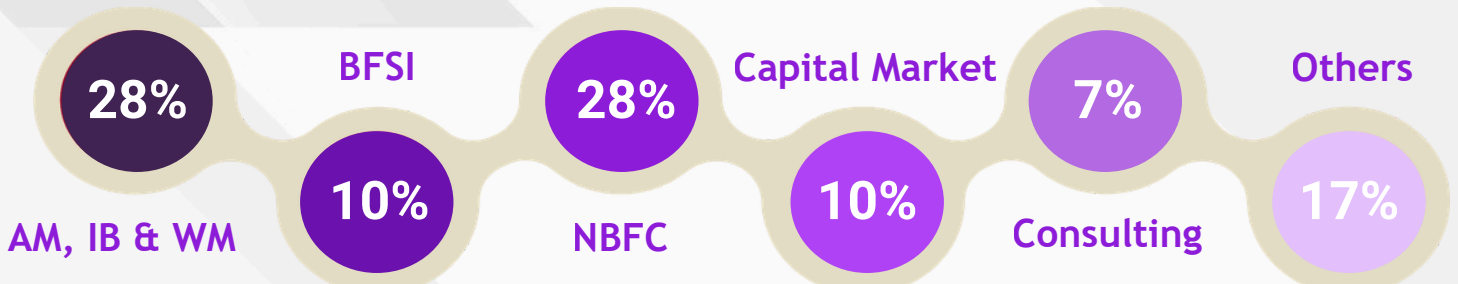
WORK EXPERIENCE



Average
Work
Experience

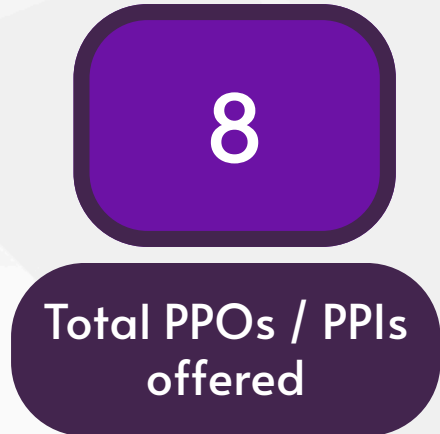
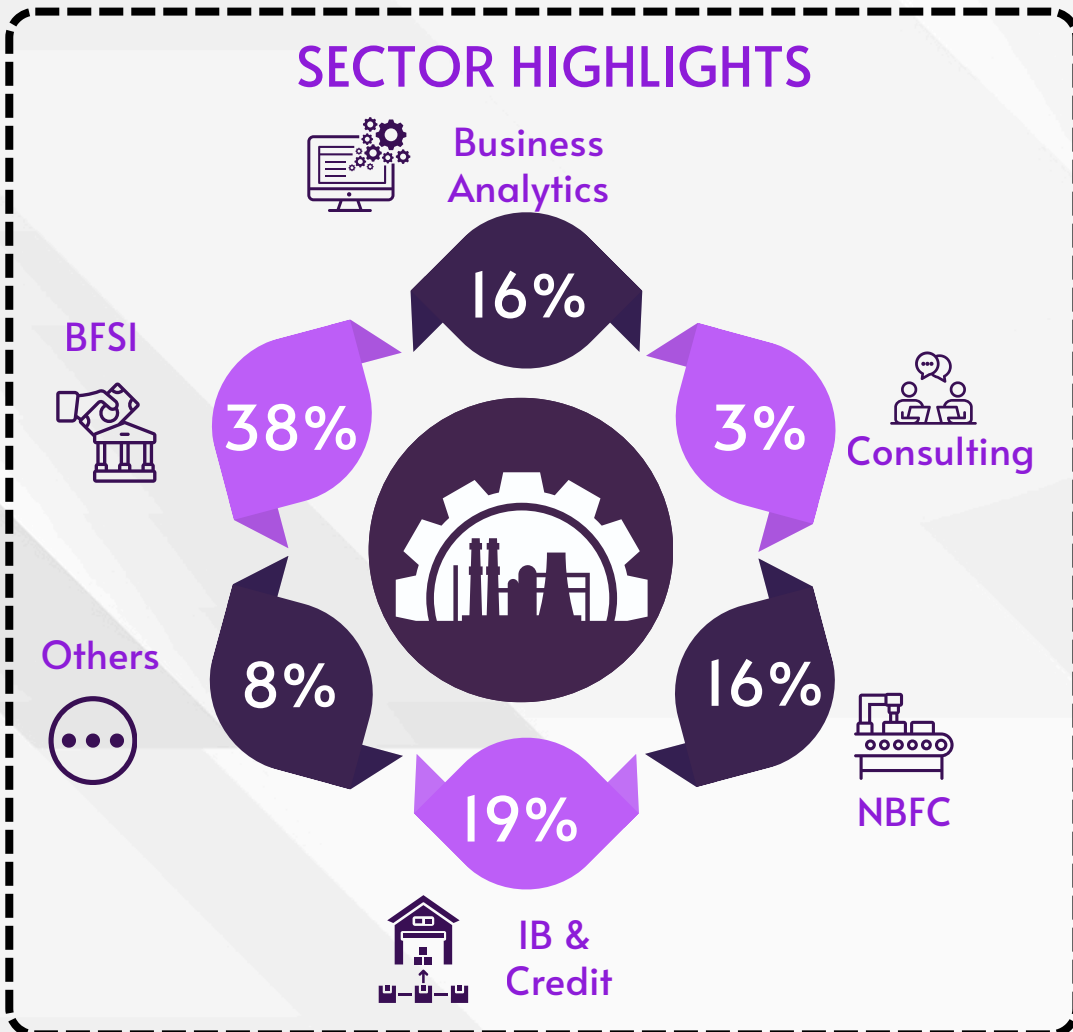
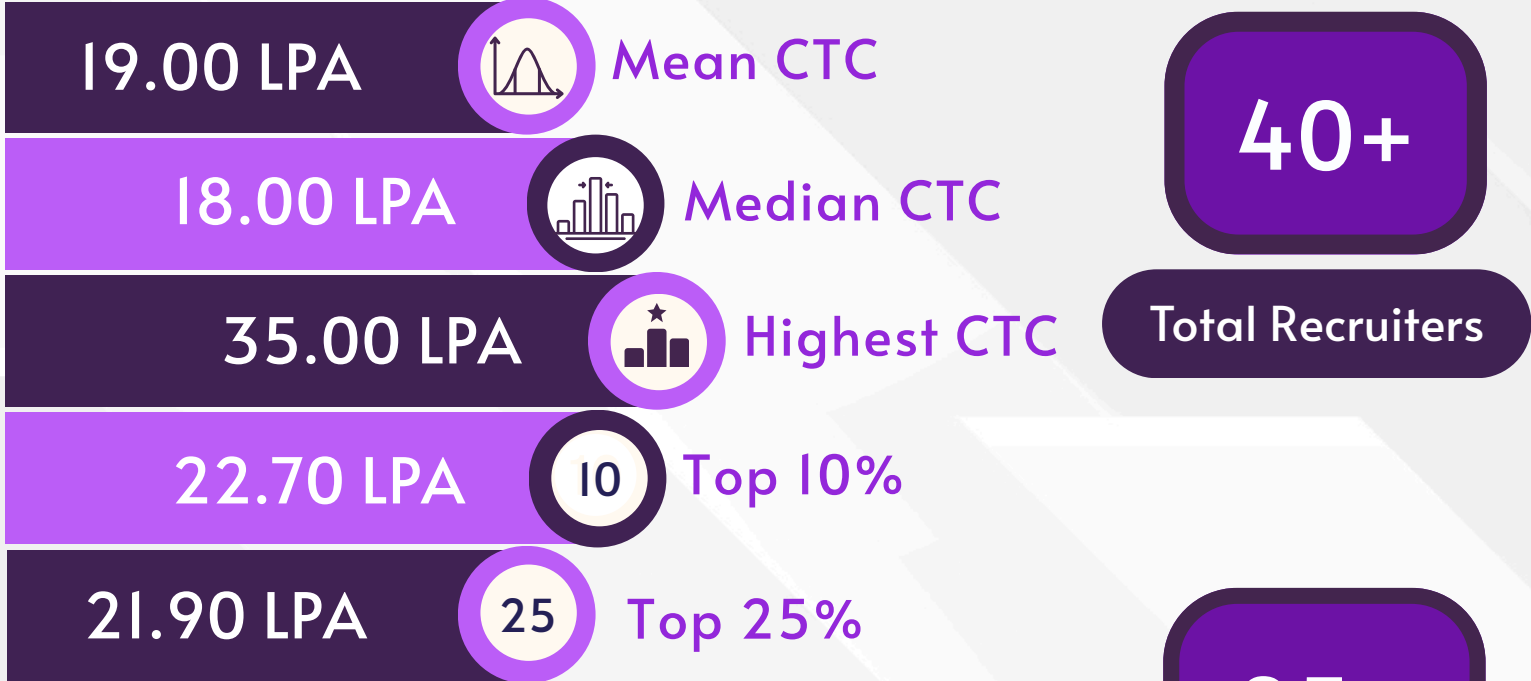
23 Months

INTERNSHIP EXPERIENCE



PLACEMENT OVERVIEW

RECRUITMENT HIGHLIGHTS



PROMINENT COMPANIES

A EQUITAS

ANANDRATHI
INVESTMENT SERVICES

AXIS BANK

BAJAJ HOUSING FINANCE

blacksoil
AN ALTERNATE CREDIT PLATFORM

Bloomberg

CareEdge
ANALYTICS & ADVISORY
A subsidiary of CARE Ratings Limited

CEDAR

Crisil
a company of S&P Global

DEZERV

ENGIE

FEDBANK
FINANCIAL SERVICES LIMITED

FRANKLIN TEMPLETON

Groww

HSBC

ICICI Bank

ICICI Securities

IMCD

IndusInd Bank

Kraft Heinz



M & G

Mercedes-Benz
The best or nothing.

MUFG

Muthoot Finance

Nippon india

NPCI
NATIONAL PAYMENTS CORPORATION OF INDIA

nuvama
wealth

PhillipCapital

RMZ

SICOMORO

TARA
CAPITAL PARTNERS

TATA CAPITAL

UNITY
Small Finance Bank

VASTU
HOUSING FINANCE

VERSE

PLACEMENT COMMITTEE



Ayush Agarwal



Nidhi Lohar



Vikrant Mitkari



Pratik Katkade



Shweta Varade



Arpit Chavan

“ ——— Message from Placement Committee

We extend our sincere gratitude to all our esteemed recruitment partners for their continued trust in the talent and potential of JBIMS students. The success of this placement season across both Summer and Final placements stands as a testament to your unwavering support and confidence in the capabilities nurtured at our institute.

This achievement would not have been possible without the constant guidance and encouragement of our faculty and administration, along with the invaluable mentorship of our alumni network. Their continued involvement has played a pivotal role in bridging the gap between academic learning and real-world application.

As we pass the baton to the next committee, we remain confident in their ability to uphold the JBIMS M.Sc. Fin. legacy and further strengthen our relationships with our valued industry partners. We thank each one of you for being an integral part of this journey and look forward to building on this shared success in the years ahead.

Our students, shaped by a rigorous academic framework and enriched through industry-driven sessions and live projects, have consistently demonstrated resilience, adaptability, and leadership across diverse roles and sectors. We are humbled by the record timelines and exceptional outcomes achieved this season, setting a new benchmark for future batches.

Masters in Human Resource Development (MHRD)

The two-year programme is intended for those with a strong desire to specialize in Human Resource Management

MHRD BATCH PROFILE

BATCH STRENGTH



41 %
Male

32

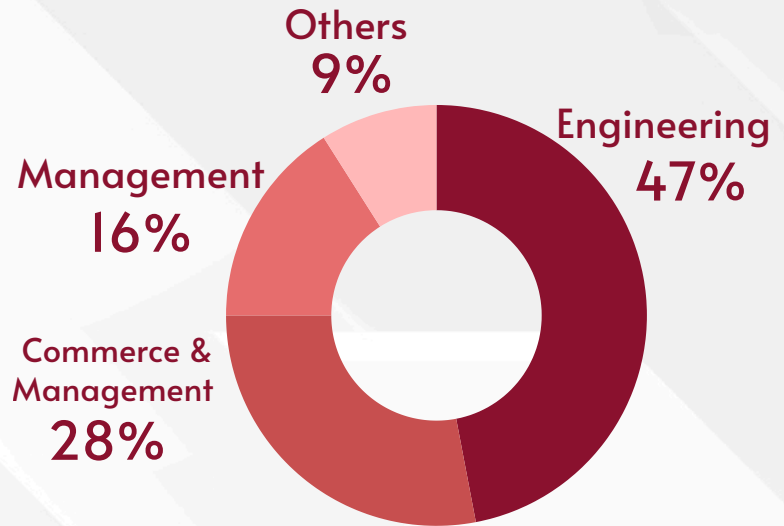


59 %
Female

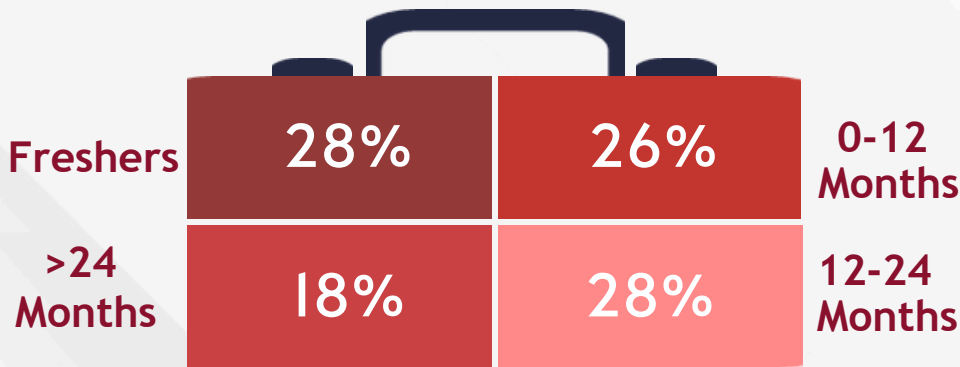
Average
Age

**26
Years**

EDUCATIONAL BACKGROUND



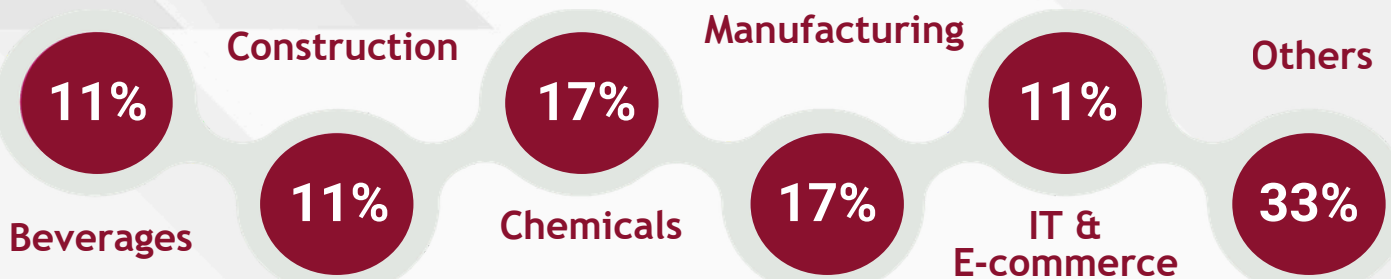
WORK EXPERIENCE



Average
Work
Experience

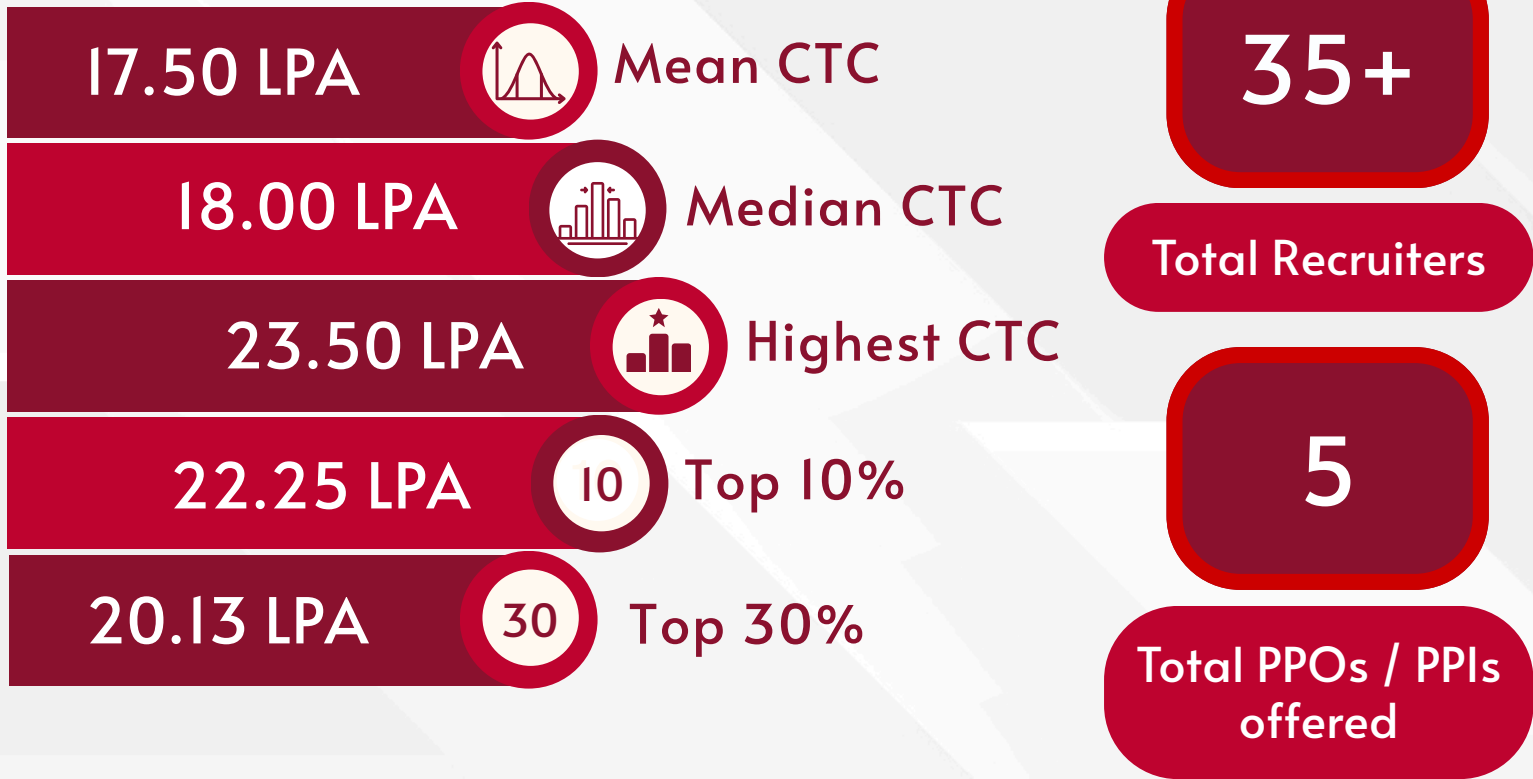
19 Months

INTERNSHIP EXPERIENCE

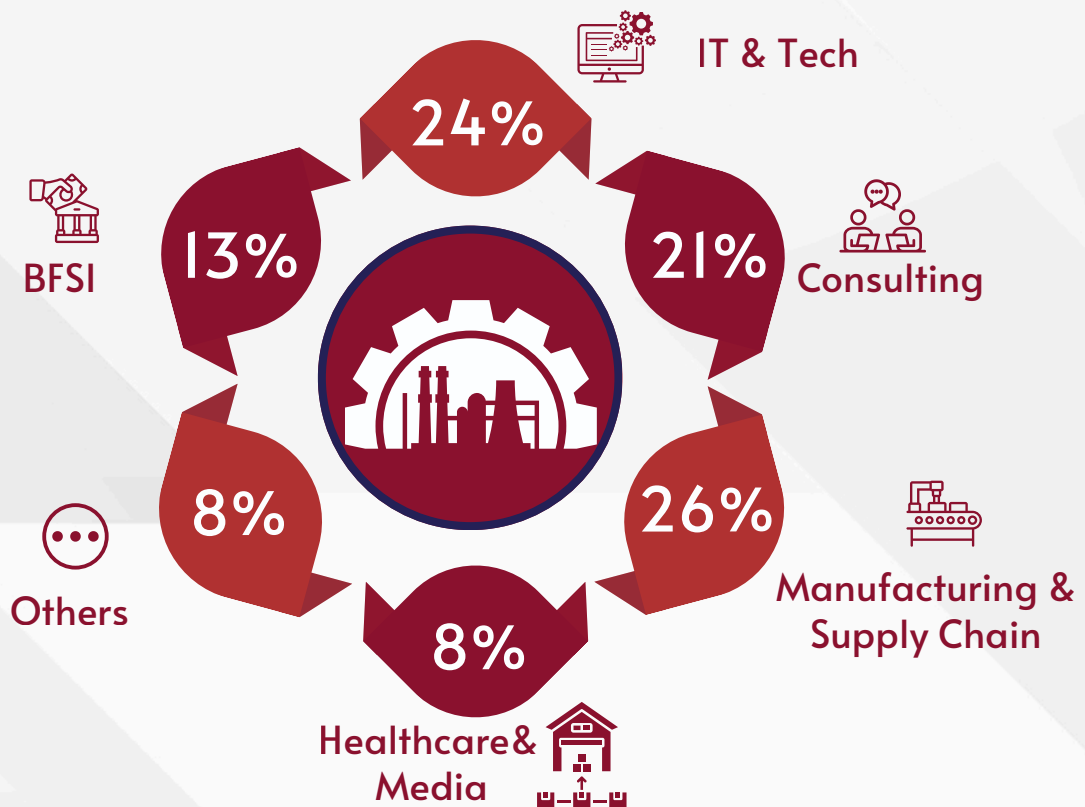


PLACEMENT OVERVIEW

RECRUITMENT HIGHLIGHTS



SECTOR HIGHLIGHTS



PROMINENT COMPANIES










































PLACEMENT COMMITTEE



Delzeen Dumasia



Hiltine Furtado



Manav Sharma



Umesh Suryawanshi

“ ——— Message from Placement Committee

We are delighted to announce the successful completion of the MHRD Placement Season at JBIMS. This achievement reflects the continued trust and confidence of our esteemed recruitment partners in the calibre, adaptability, and leadership potential of our students.

We extend our sincere gratitude to our corporate partners for their unwavering support and to our faculty, administration, and alumni for their invaluable guidance in shaping future HR leaders. Through a rigorous academic curriculum, industry engagement, and experiential learning, our students have consistently demonstrated the ability to create meaningful impact across organizations.

As we conclude another successful placement season, we thank all our stakeholders for being an integral part of this journey. We remain committed to strengthening our industry partnerships and look forward to building on this shared success in the years to come. We are confident that the incoming Placement Committee will continue to uphold the legacy of excellence that defines the MHRD programme at JBIMS.



JBIMS
Jamnalal Bajaj Institute of Management Studies

Jamnalal Bajaj Institute of Management Studies
164, Backbay Reclamation, H. T. Parekh Marg,
Churchgate, Mumbai - 400 020.

 **+91 95898 58580**

 **www.jbims.edu**

placements@jbims.edu (Masters of Management Studies)

 **mfin.placements@jbims.edu (Masters of Sciences in Finance)**

mhrd.placements@jbims.edu (Masters in Human Resource Development)